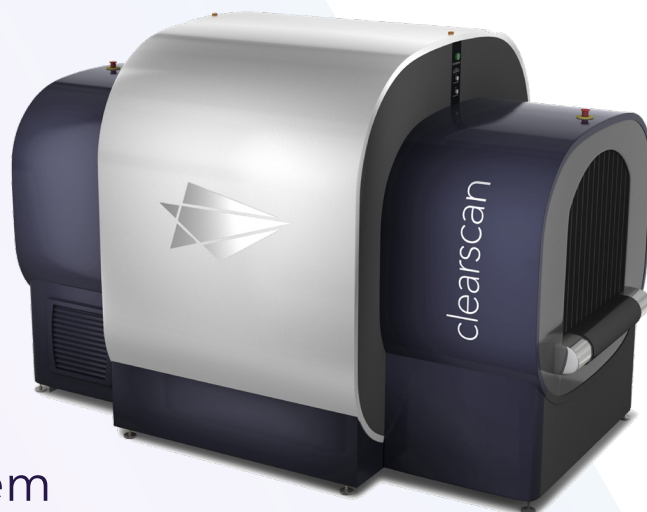


ClearScan™

DUAL-ENERGY COMPUTED TOMOGRAPHY (CT) SCANNER

High-throughput explosive and prohibited items detection system for cabin baggage



The ClearScan cabin baggage explosive detection system (EDS) combines dual-energy computed tomography (CT) technology and advanced explosives detection algorithms to detect solid, liquid, and sheet explosives as well as smaller emerging threats such as home-made explosives (HMEs), whether in the bag or in a laptop - all at a low false alarm rate. When integrated with third-party algorithms for prohibited items detection, ClearScan's capabilities are further positioned to meet current and future detection standards while increasing passenger convenience.

IMPROVED PASSENGER CONVENIENCE

ClearScan allows travelers to transit the checkpoint security line in less time and with less effort:

- Eliminating divesting and re-vesting of liquids and electronics, allowing passengers to save time and use fewer trays
- Ensuring a low false alarm rate, reducing manual bag re-checks
- Auto divert pushes the alarmed bag to the re-check side allowing cleared bags to proceed uninterrupted
- Accelerating screening time through automated detection
- Self-paced parallel divestiture allows multiple passengers to enter simultaneously and bypass slower travelers
- Optional integration with automated tray return systems (TRS)

GREATER OPERATIONAL EFFICIENCY

ClearScan can significantly improve throughput and efficiency while enabling security agents to focus on requirements.

- AI-based enhanced explosive and contraband algorithms
- 3D images help identify prohibited items from electronics and approved liquids, especially in dense baggage
- Remote screening efficiently allocates alarm resolution among security operators and reduces decision time
- Adjustable conveyor height
- Reduces manpower requirements and overall screening costs
- Fasting screening to increase throughput
- Improves security personnel threat detection capabilities

PRODUCT HIGHLIGHTS

- ECAC EDS C3 standard approved
- When integrated with ProPassage ATRs, throughput at 600+ passengers per hour
- Eliminates divesting of liquids and electronics
- Enhanced algorithms for detecting prohibited items, e.g. firearms, solid and liquid explosive devices, narcotics, currency, sharps, and other threats
- Low false alarm rate
- 3D and 2D image options
- Full complement of options (TIP, computer-based training, image archiving, network redundancy)
- Industry leading compact footprint
- Supports image on alarm CONOP
- Integrates with ATRS from all leading manufacturers, including Leidos
- Open architecture capability
- Hundreds of global deployments

FOR MORE INFORMATION
leidos.com/security-detection